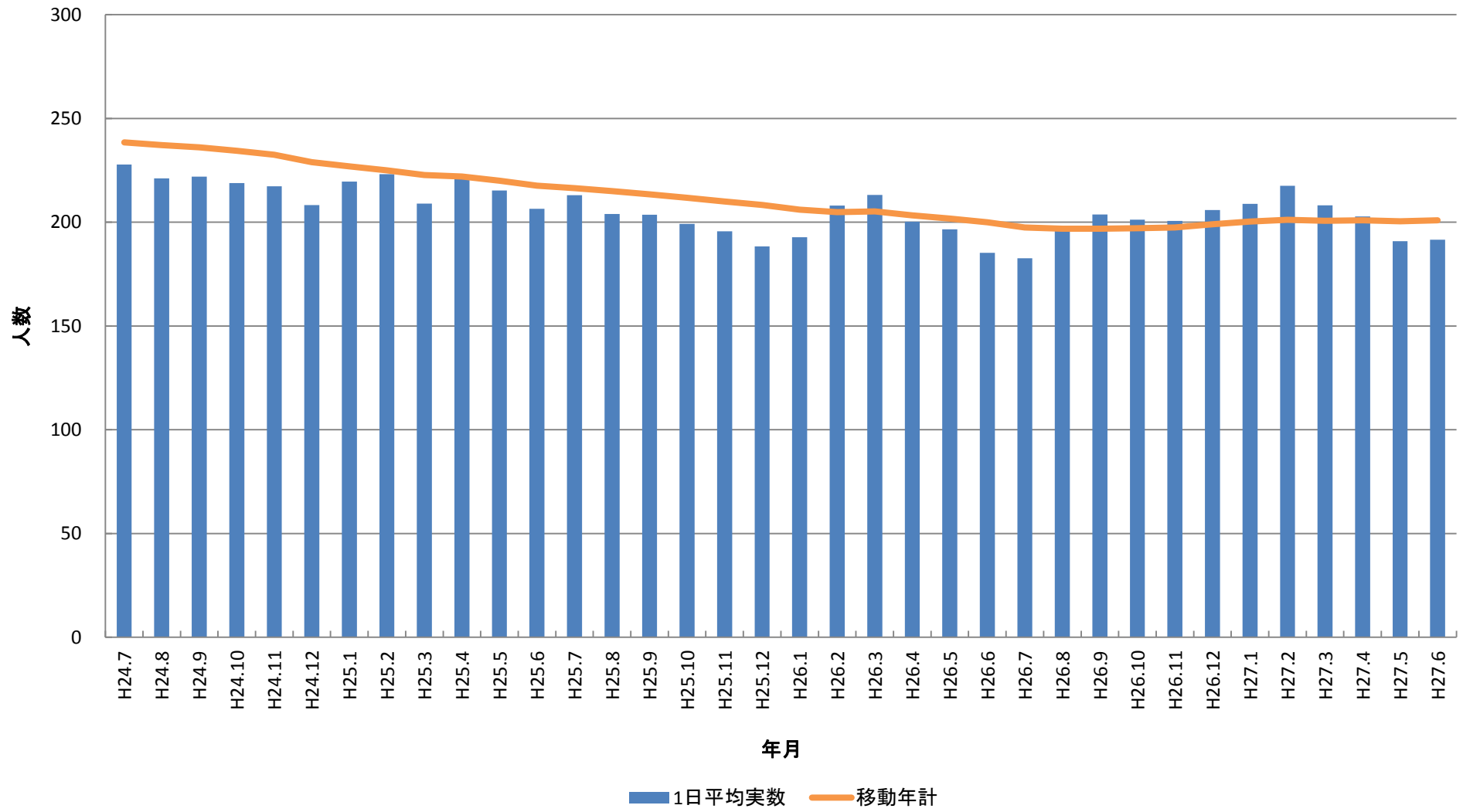
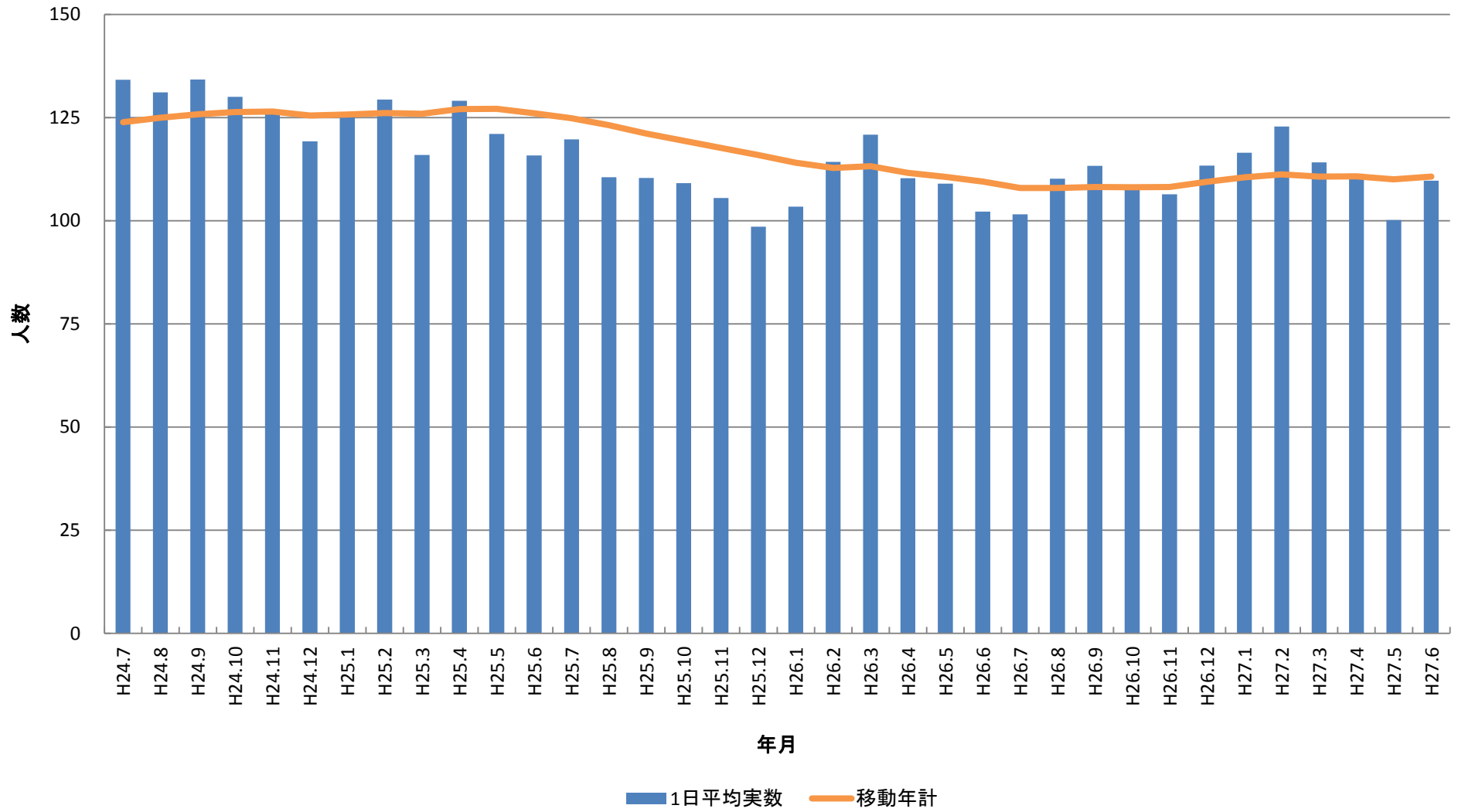


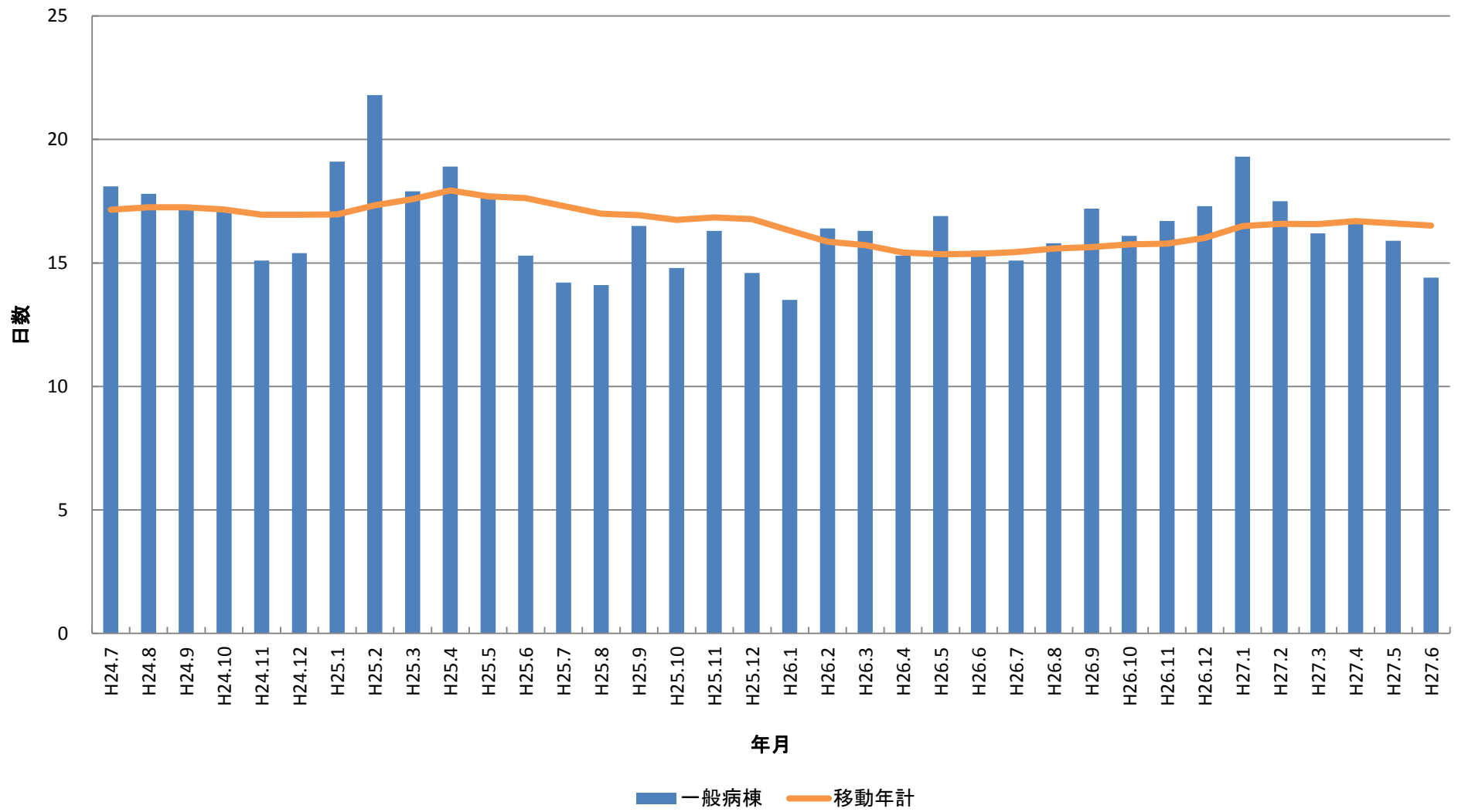
入院在院患者統計



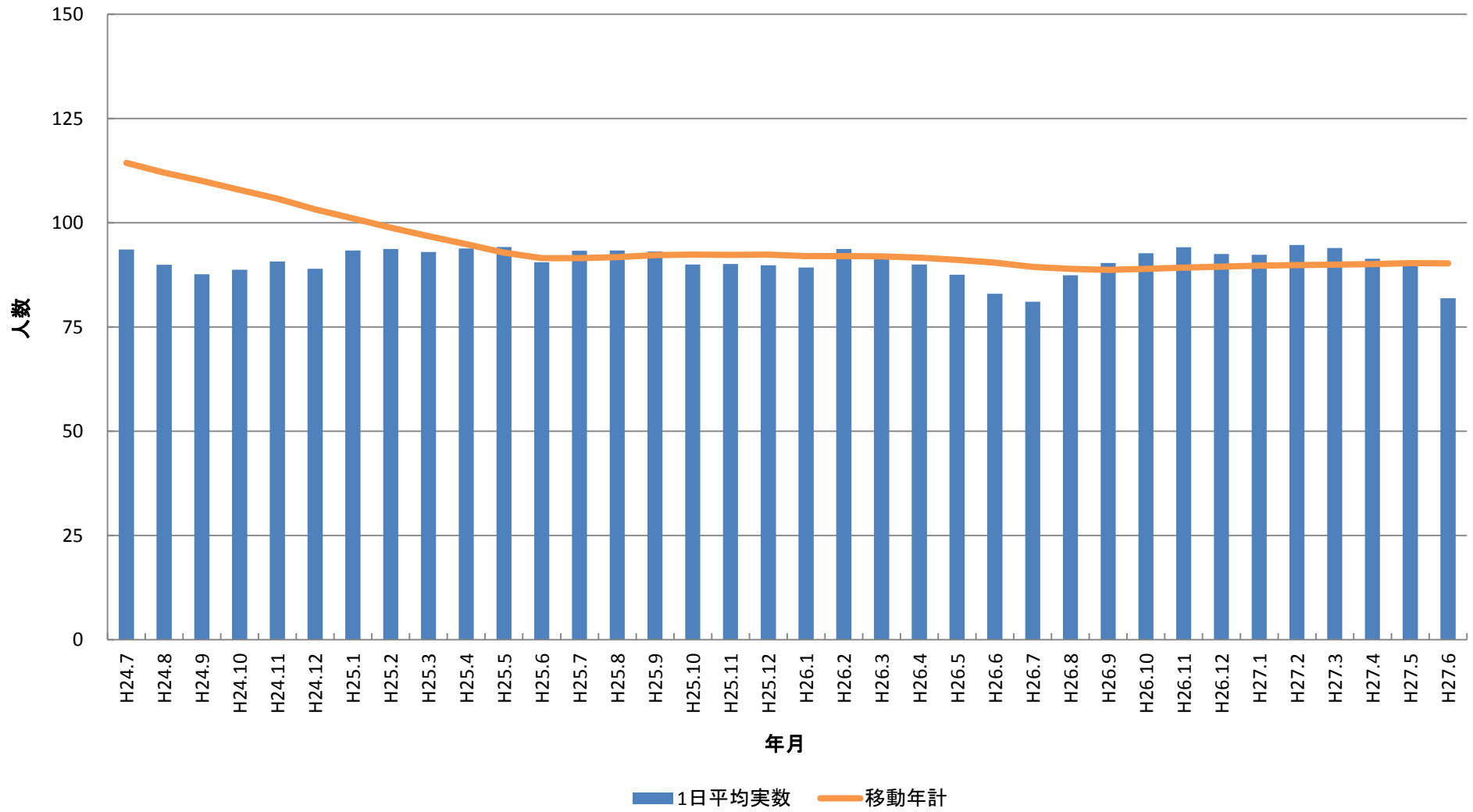
一般病棟在院患者統計



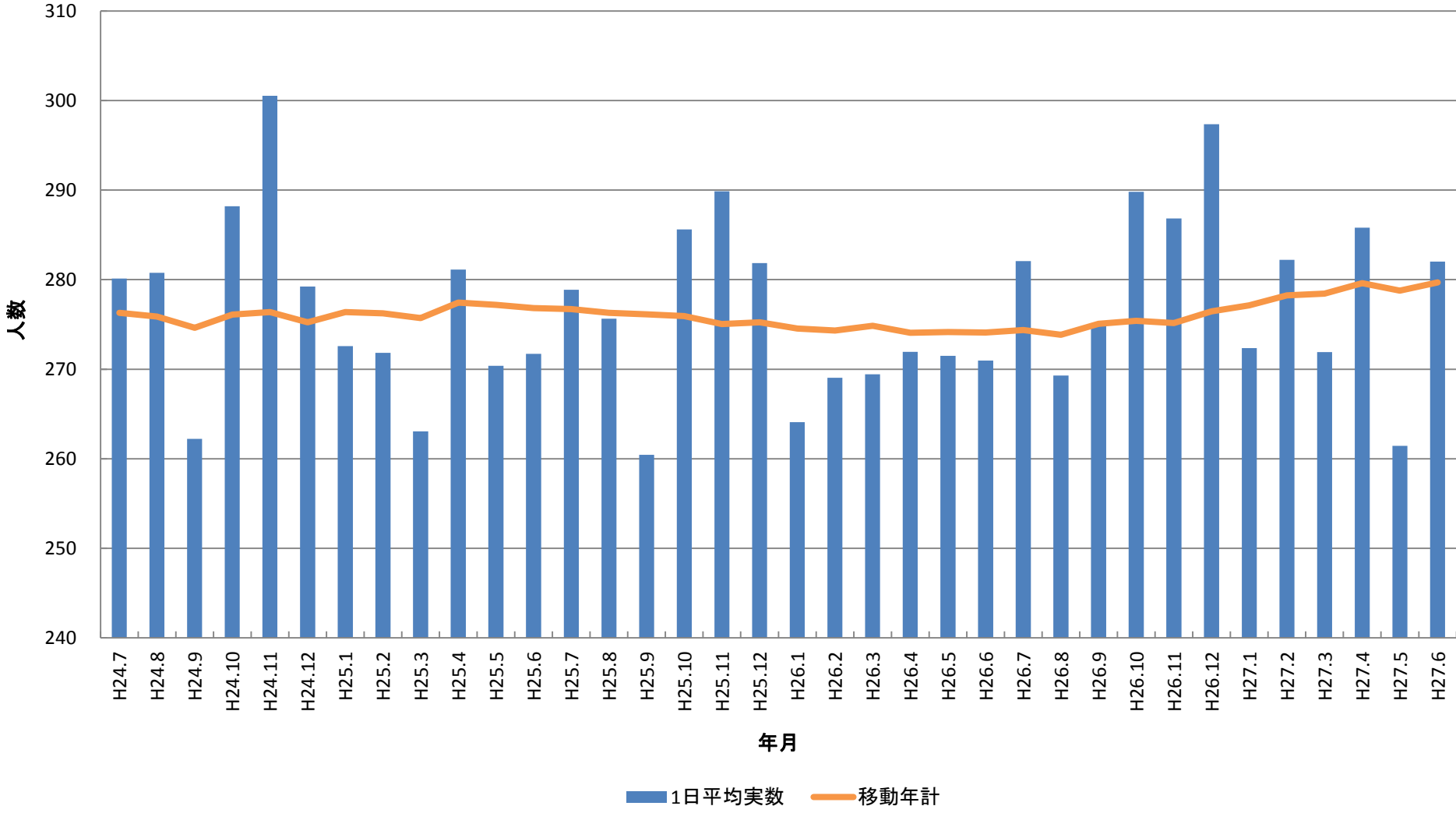
一般病棟平均在院日数(除外項目除外せず)



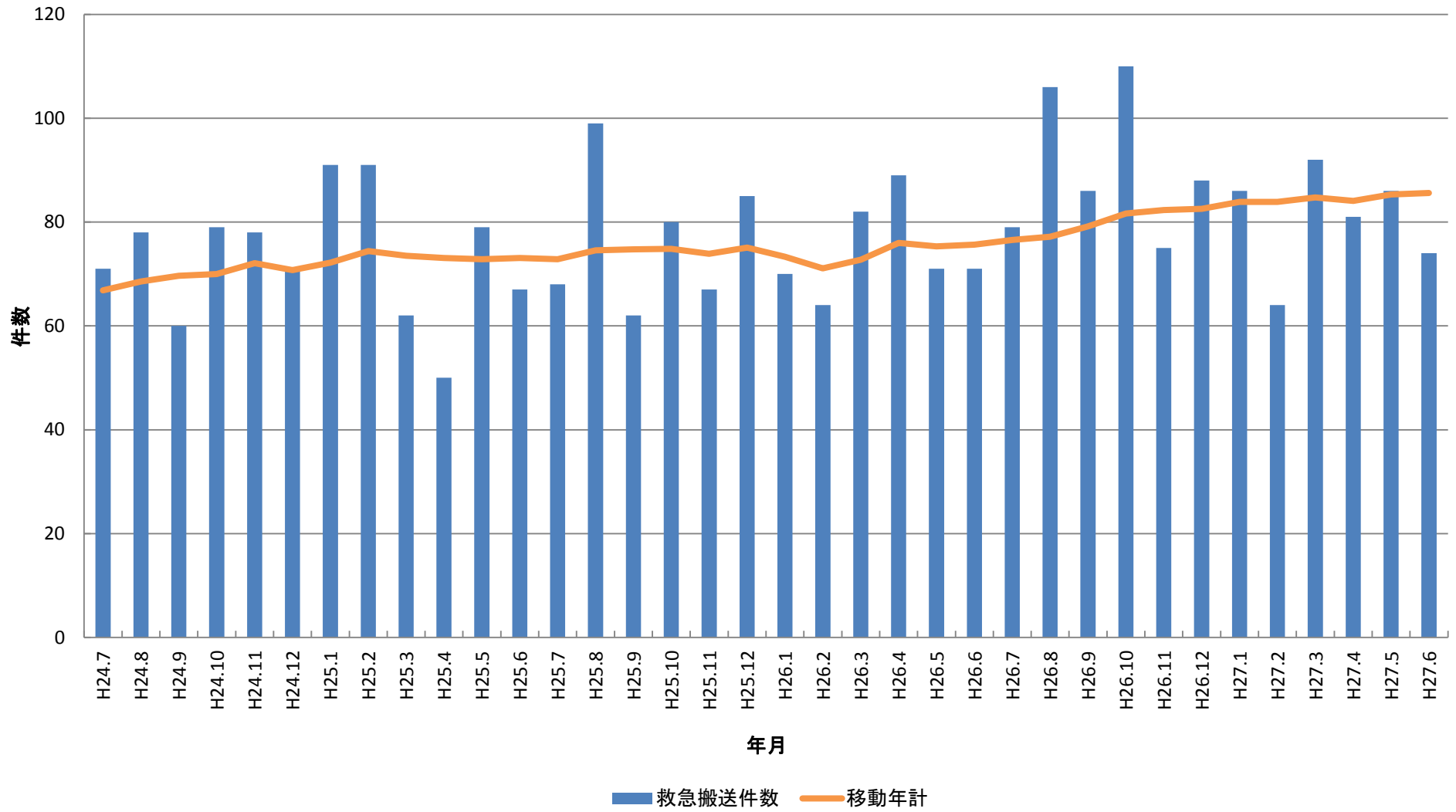
療養病棟在院患者統計



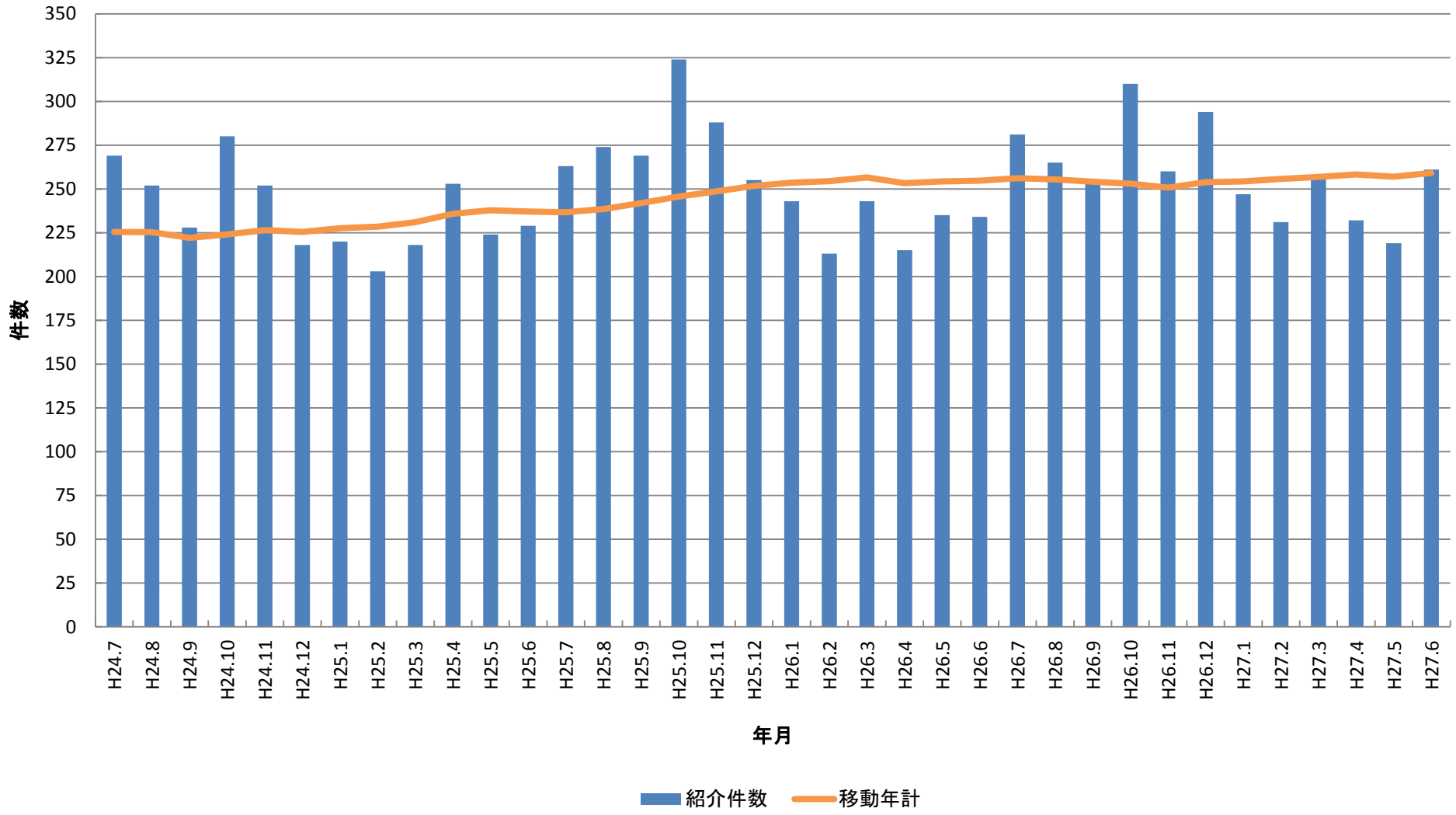
外来患者統計(1日平均)



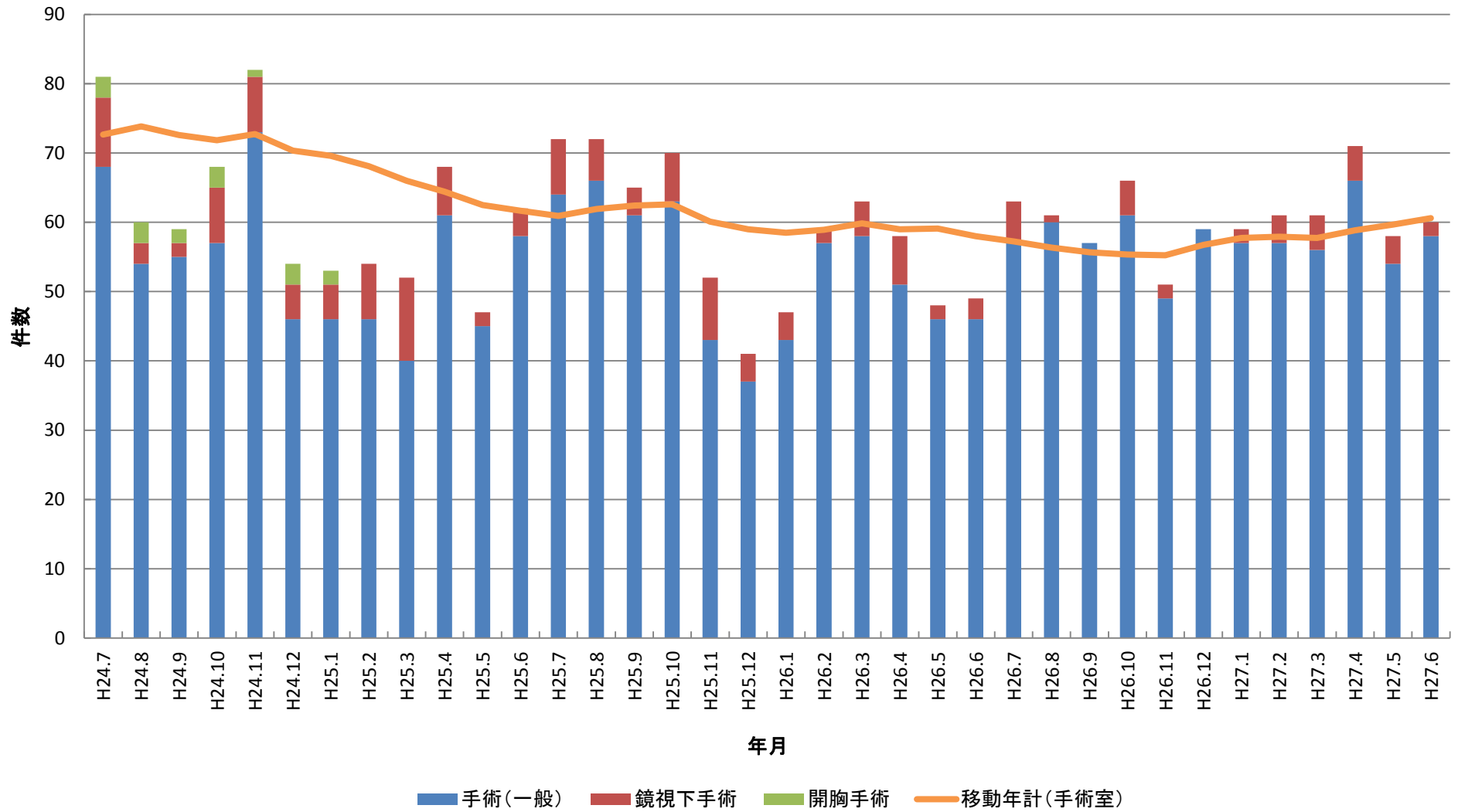
救急搬送件数



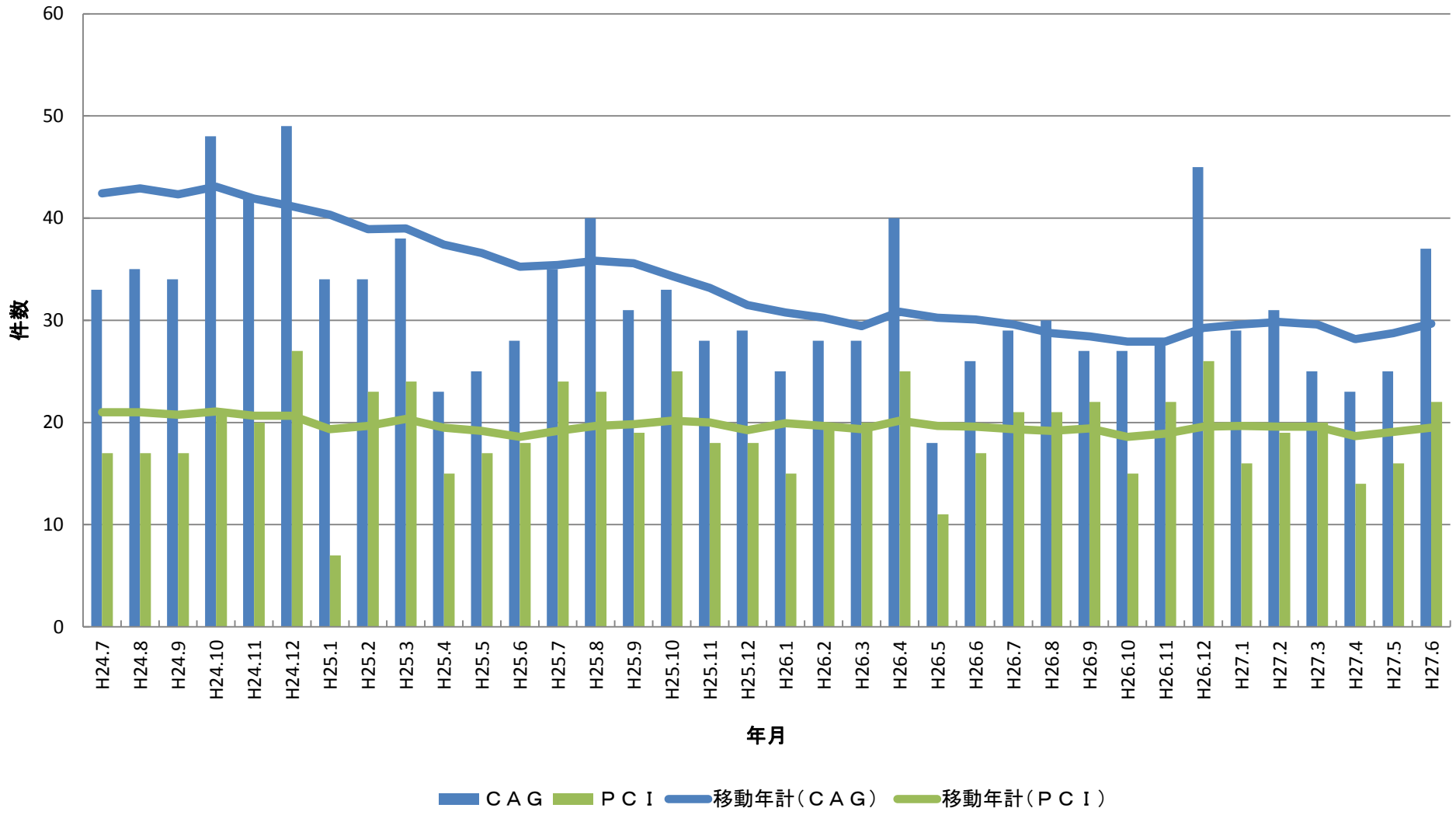
紹介患者件数



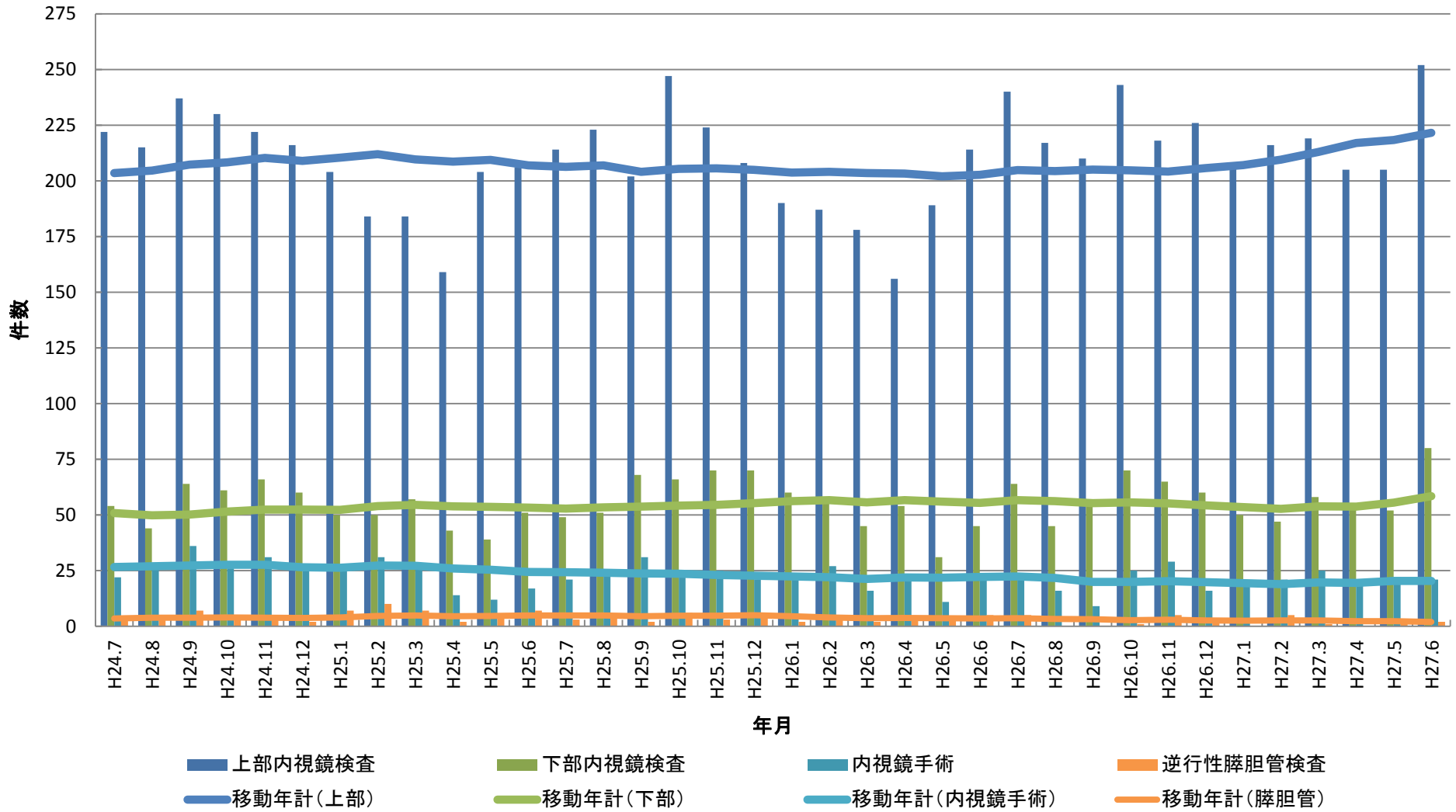
手術室件数



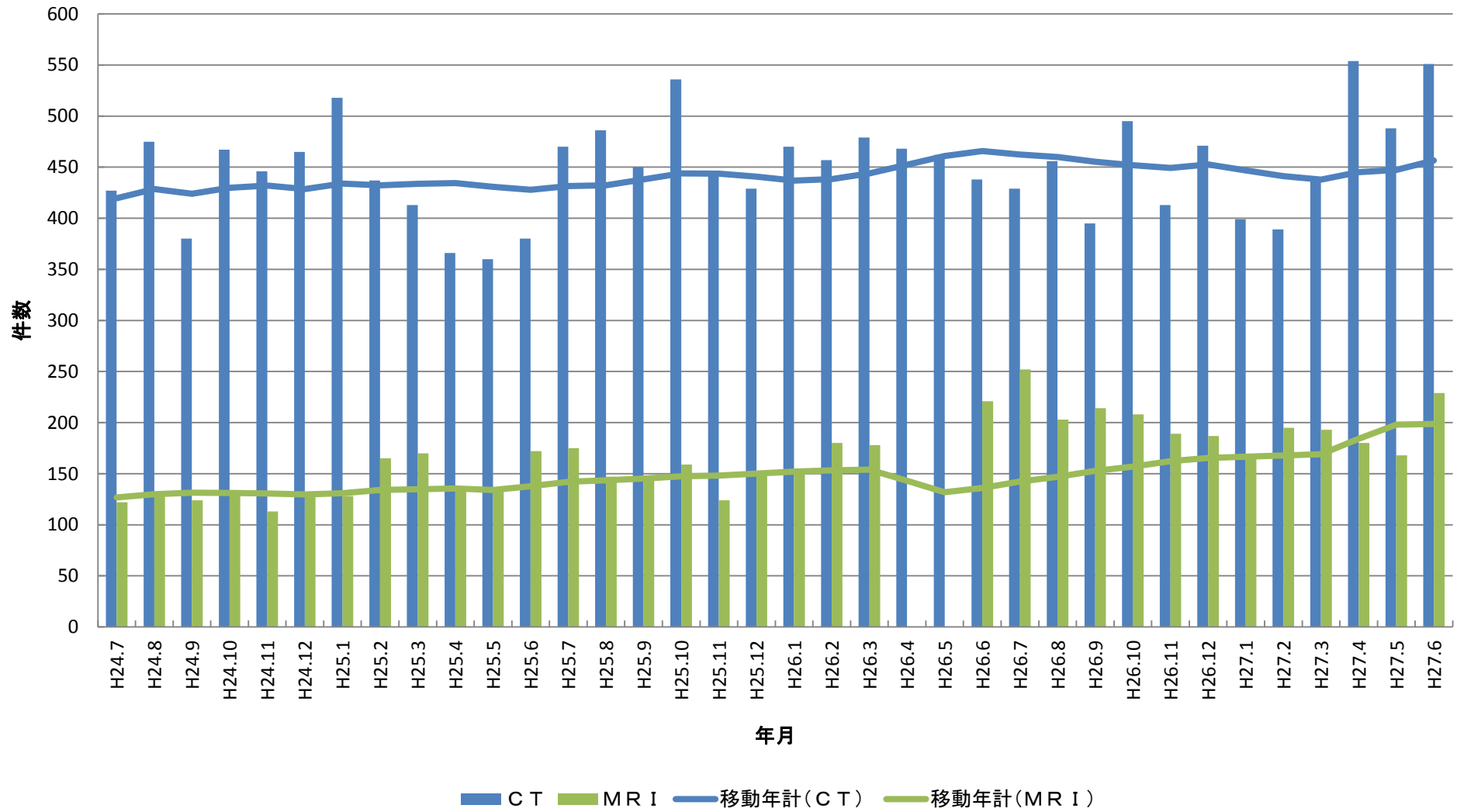
CAG・PCI件数



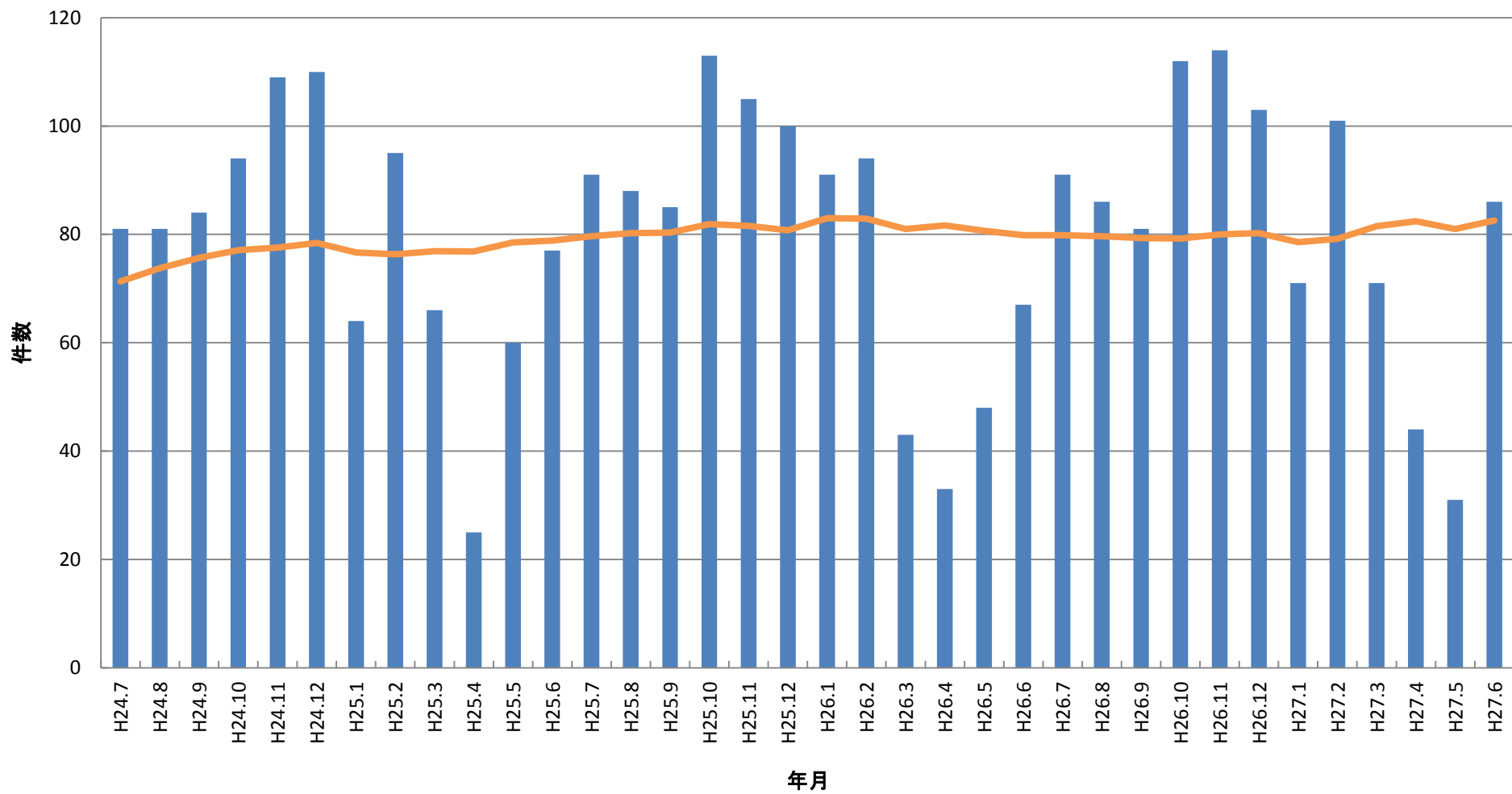
内視鏡検査・手術件数



CT・MRI件数

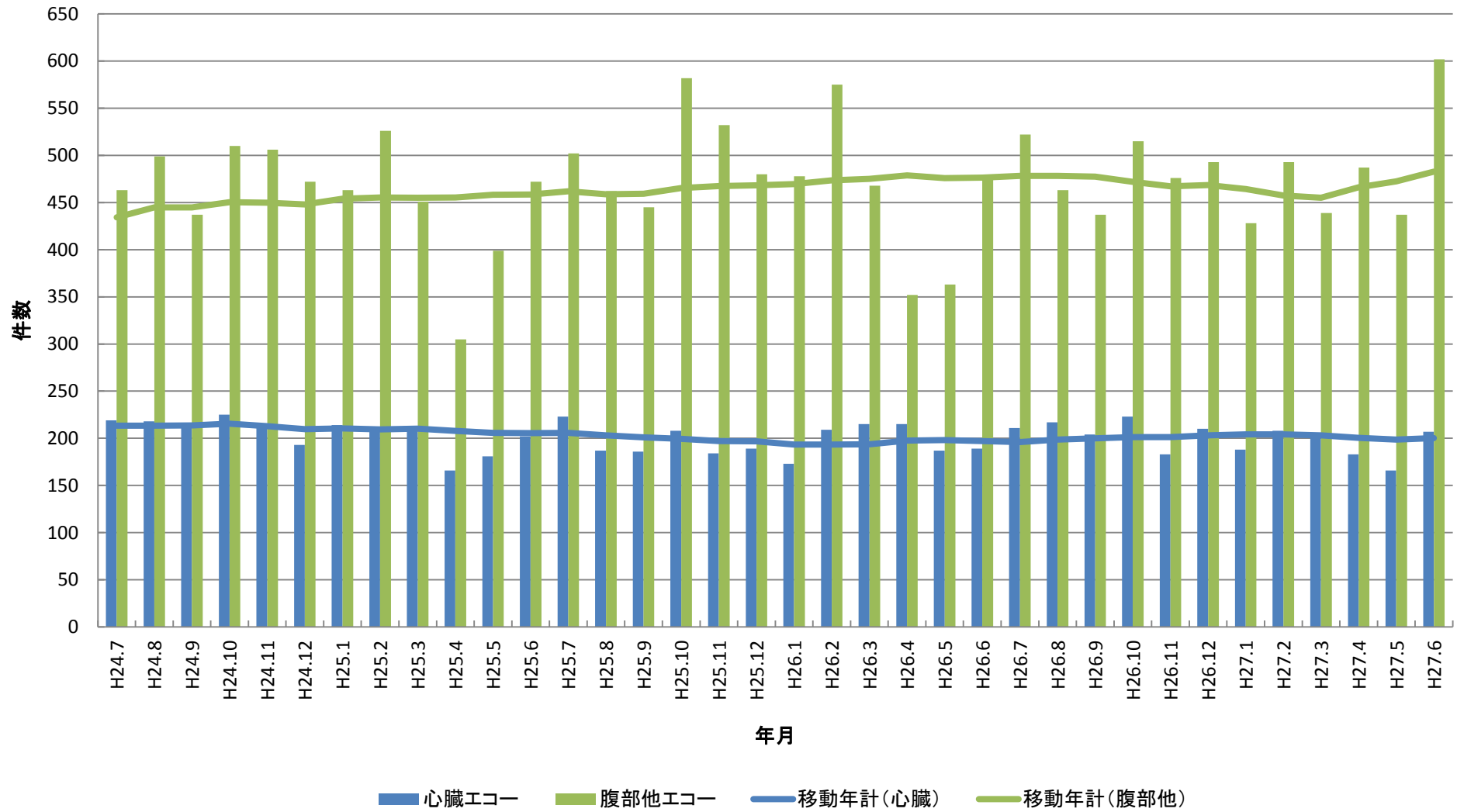


マンモグラフィー検査(乳房撮影)

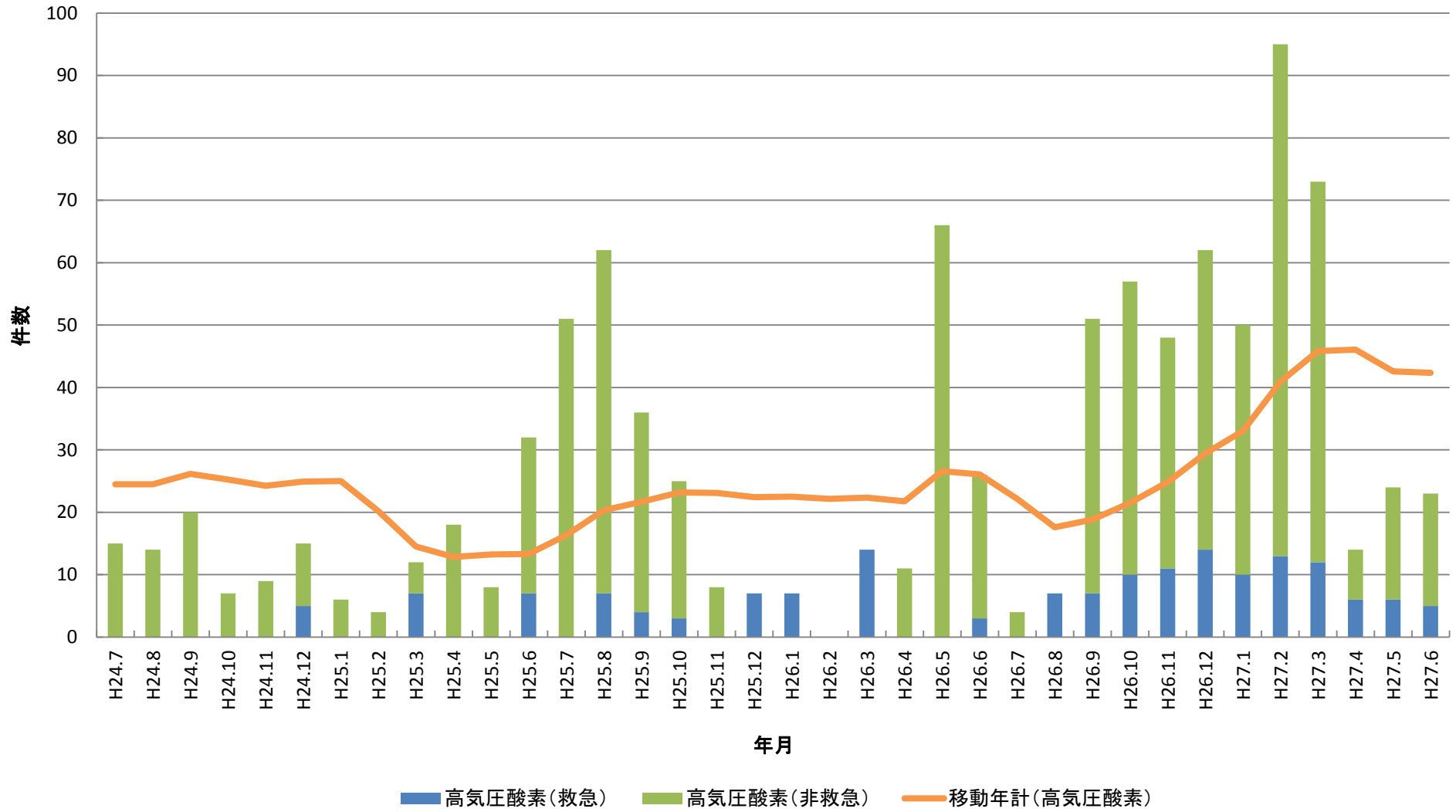


■ マンモグラフィー検査(乳房撮影) — 移動年計

超音波エコー一件数



高気圧酸素件数



ドック・企業検診件数

