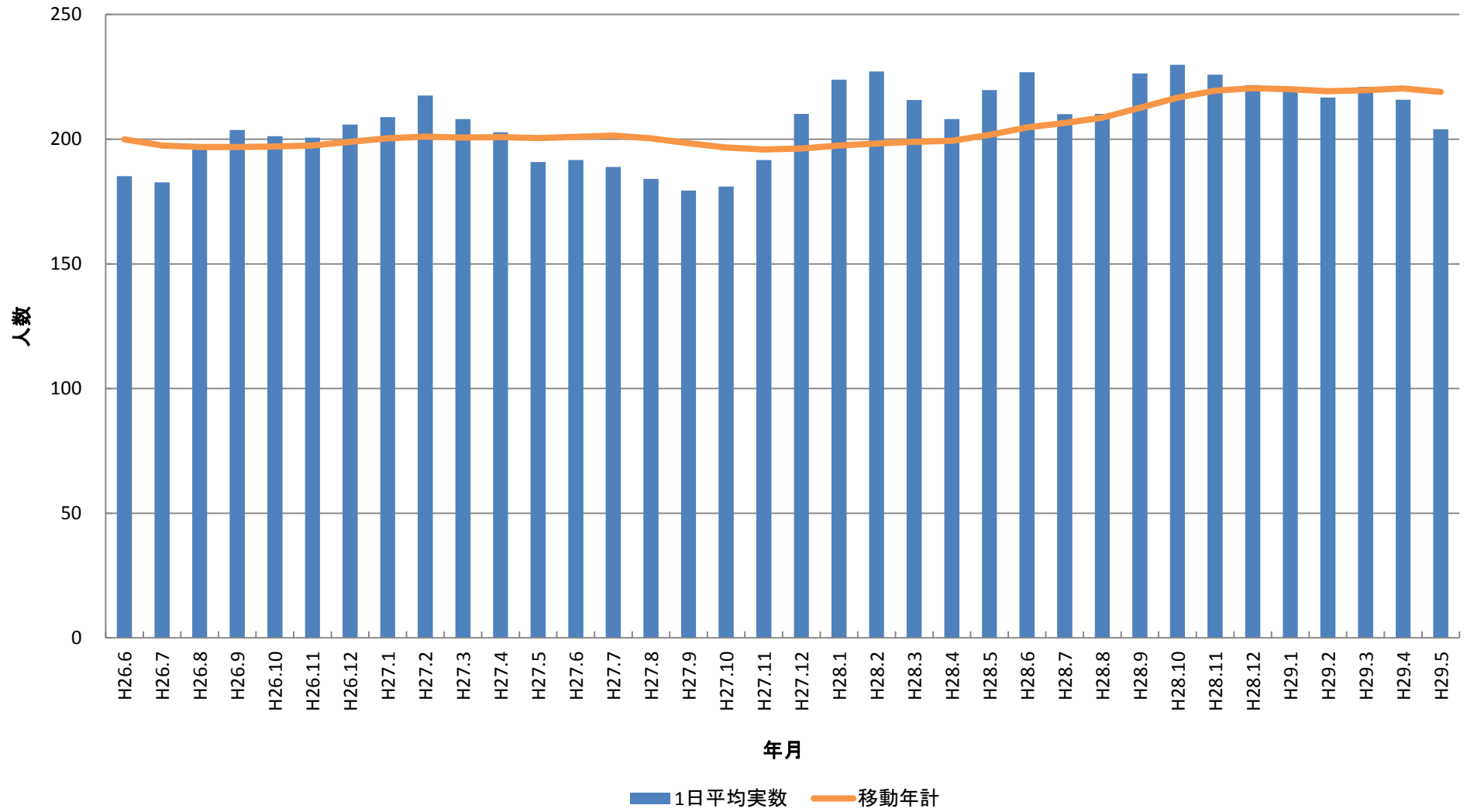
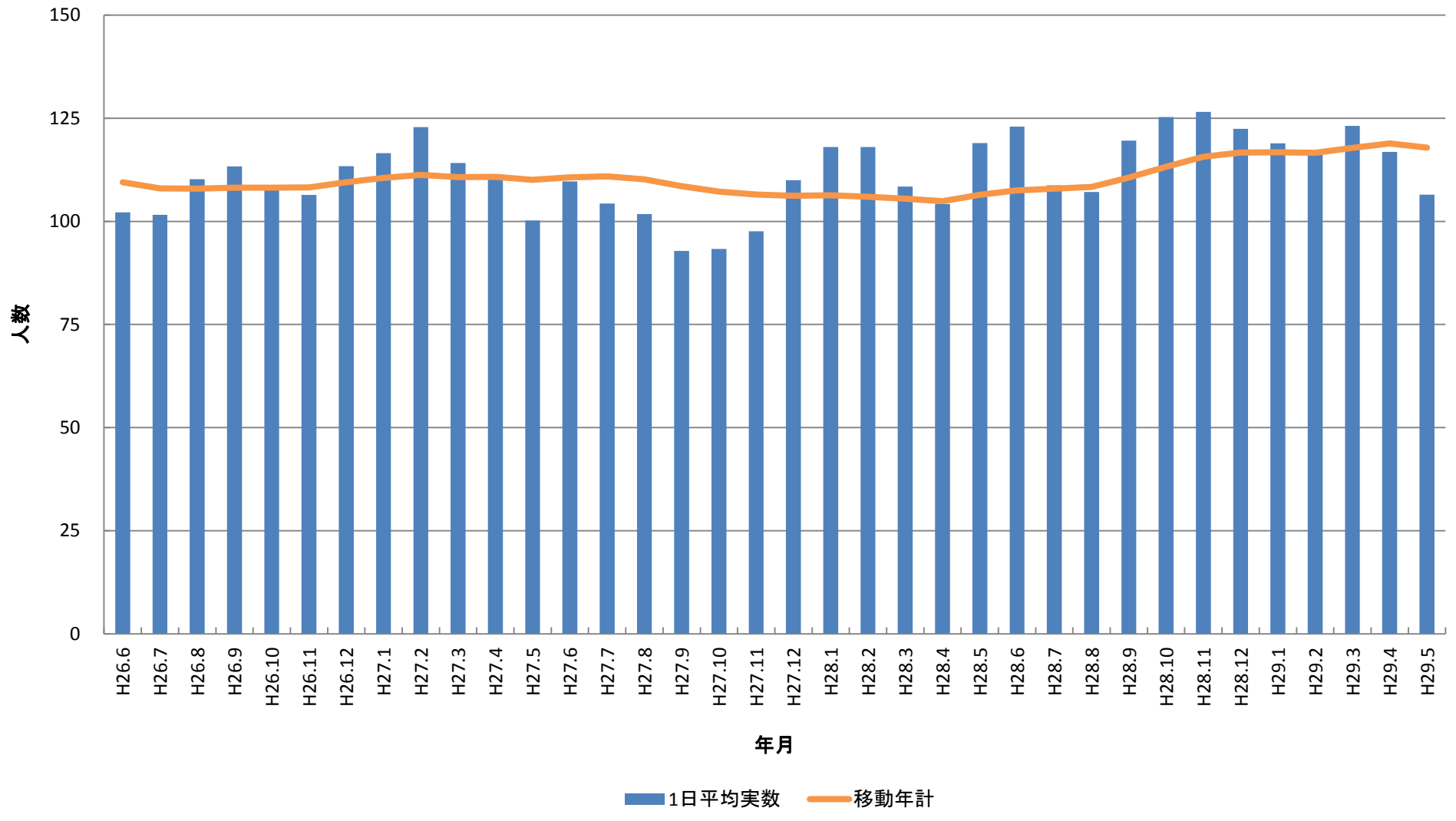


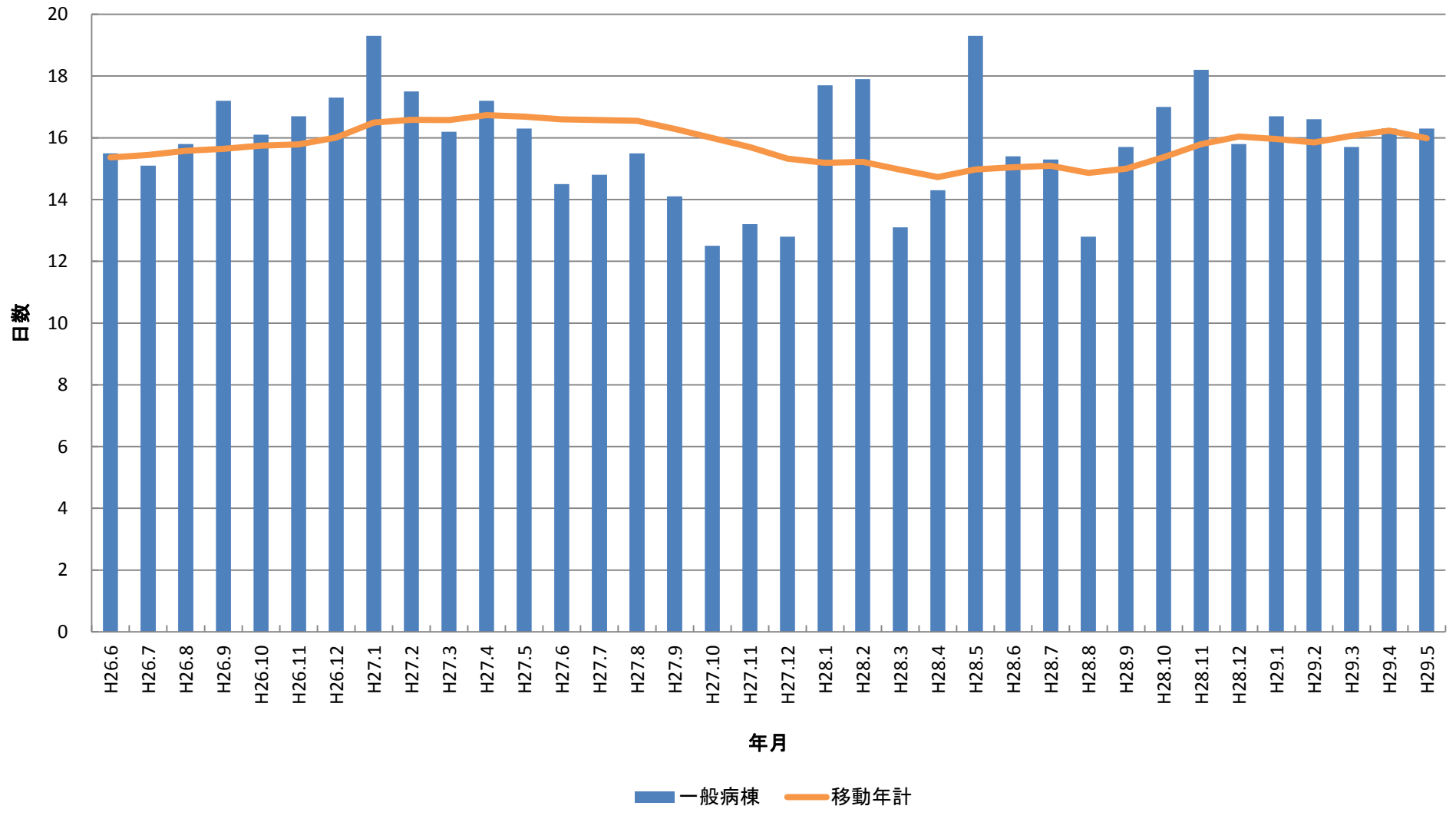
入院在院患者統計



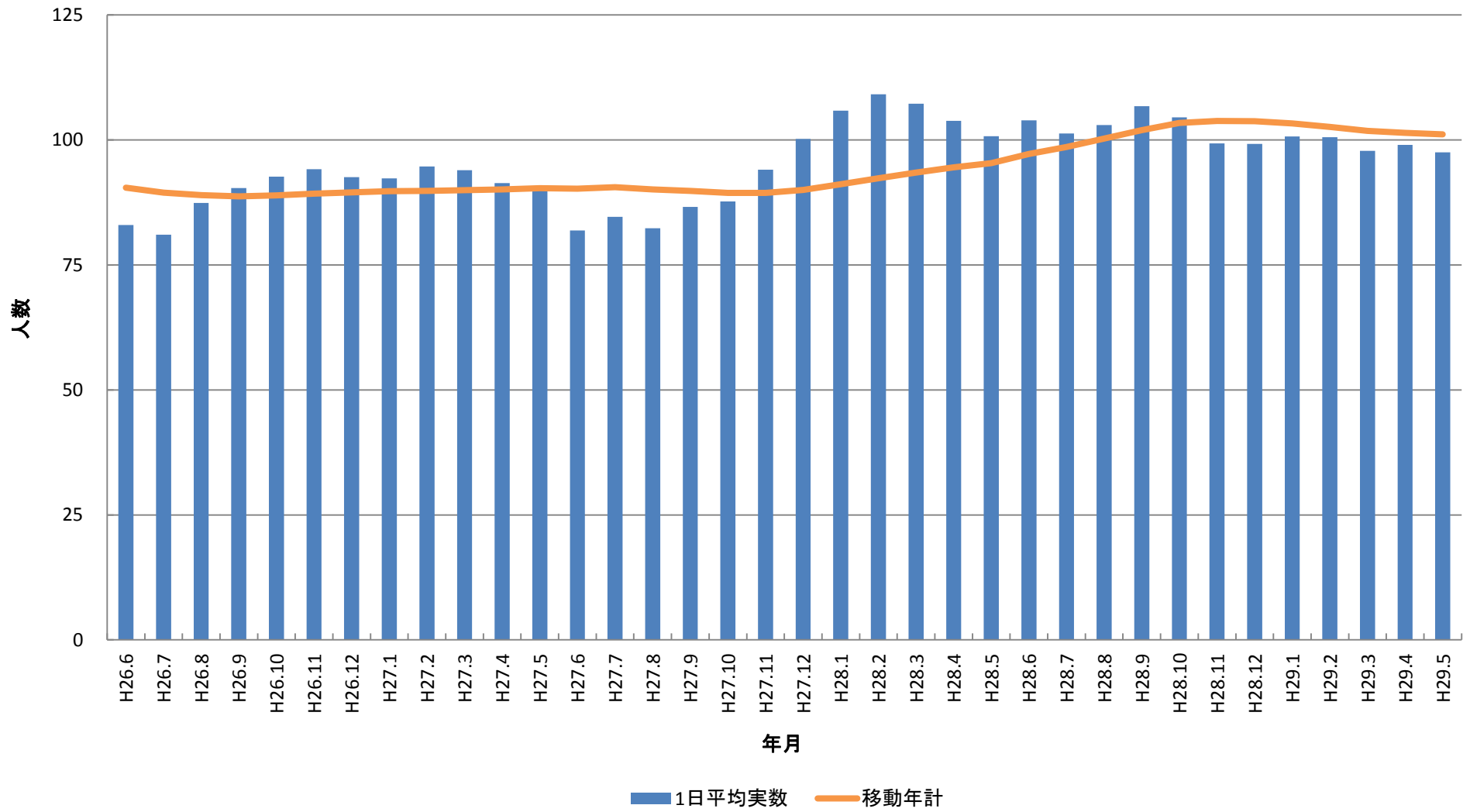
一般病棟在院患者統計



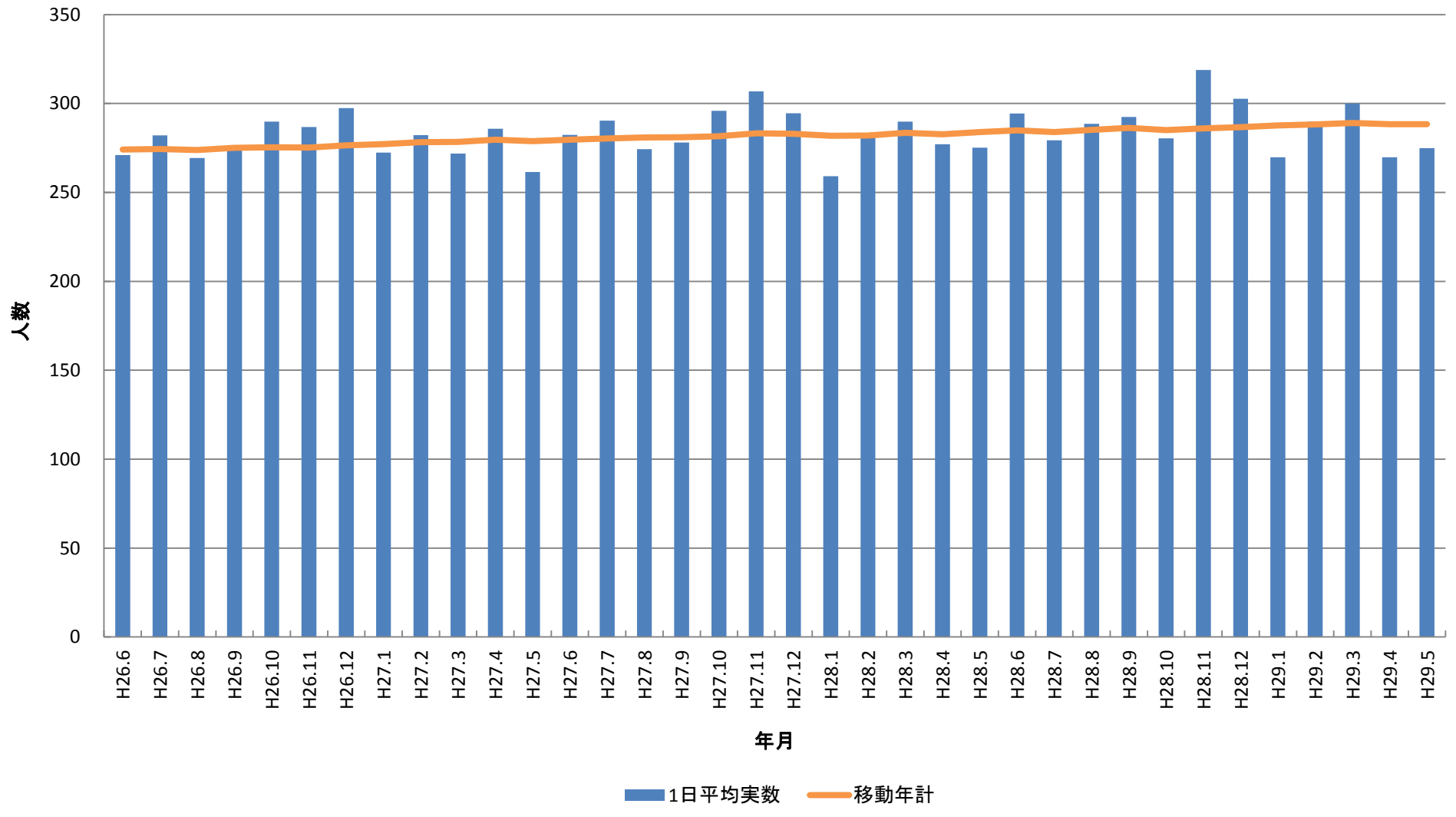
一般病棟平均在院日数(除外項目除外せず)



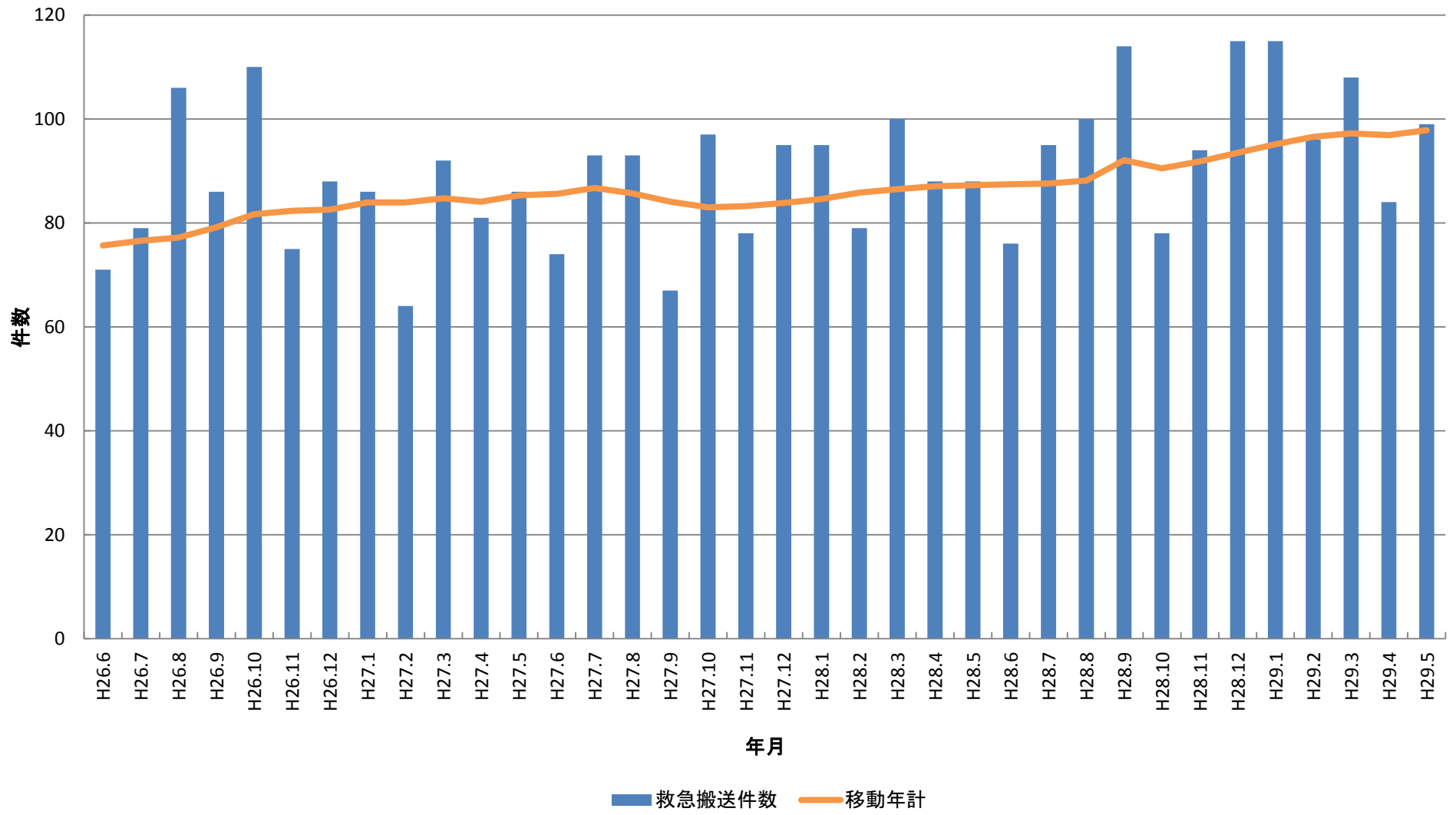
療養病棟在院患者統計



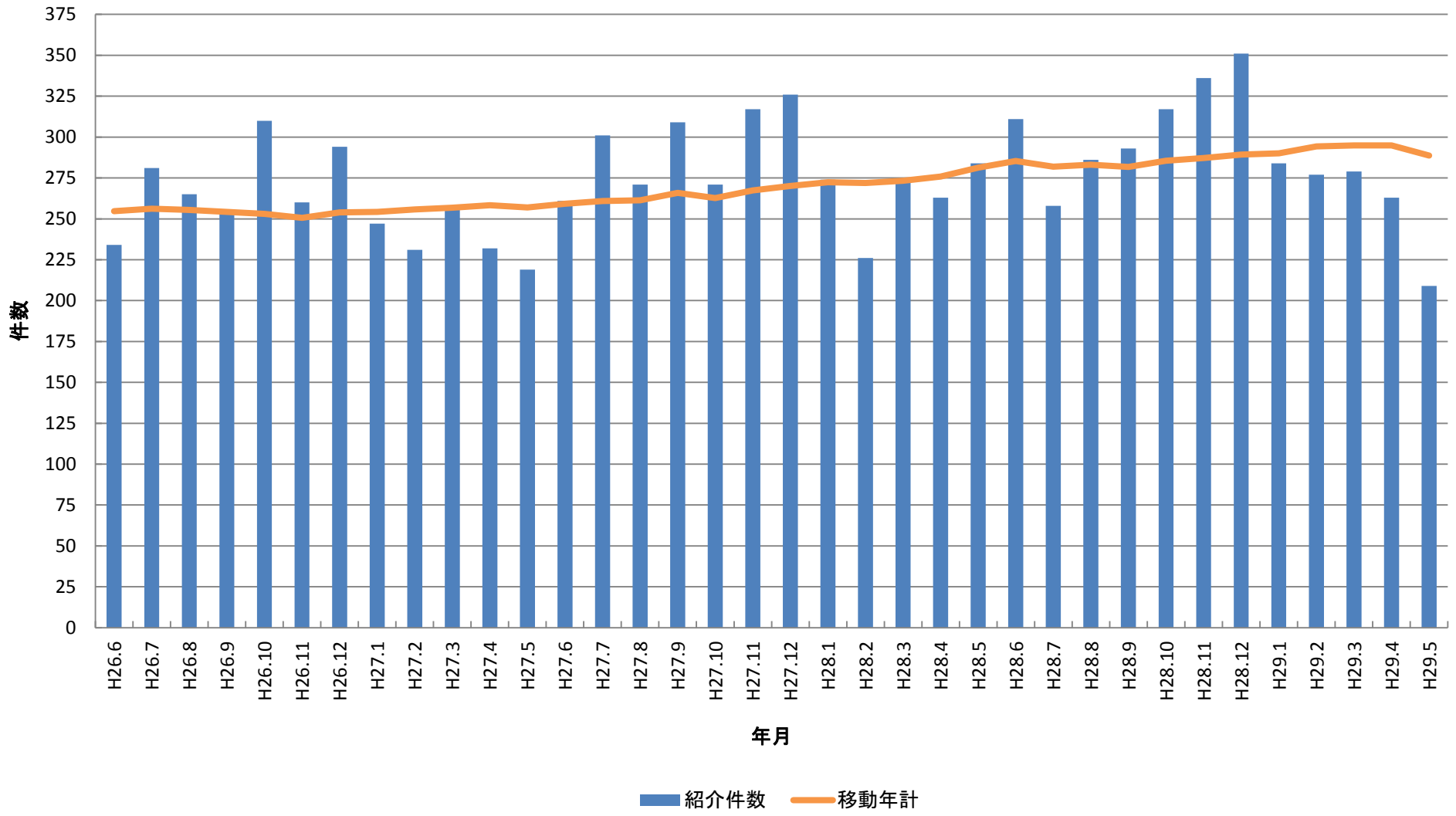
外来患者統計(1日平均)



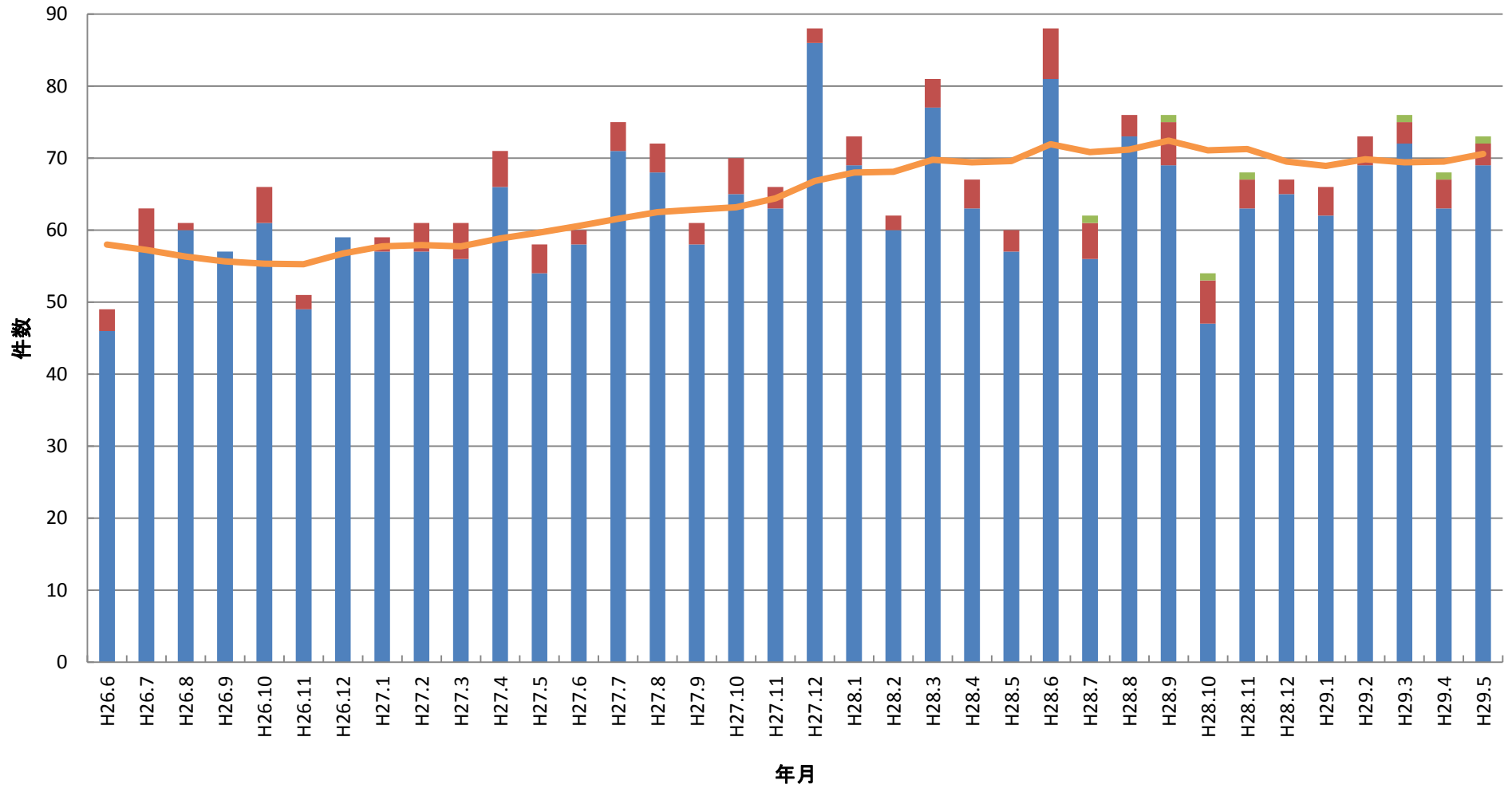
救急搬送件数



紹介患者件数

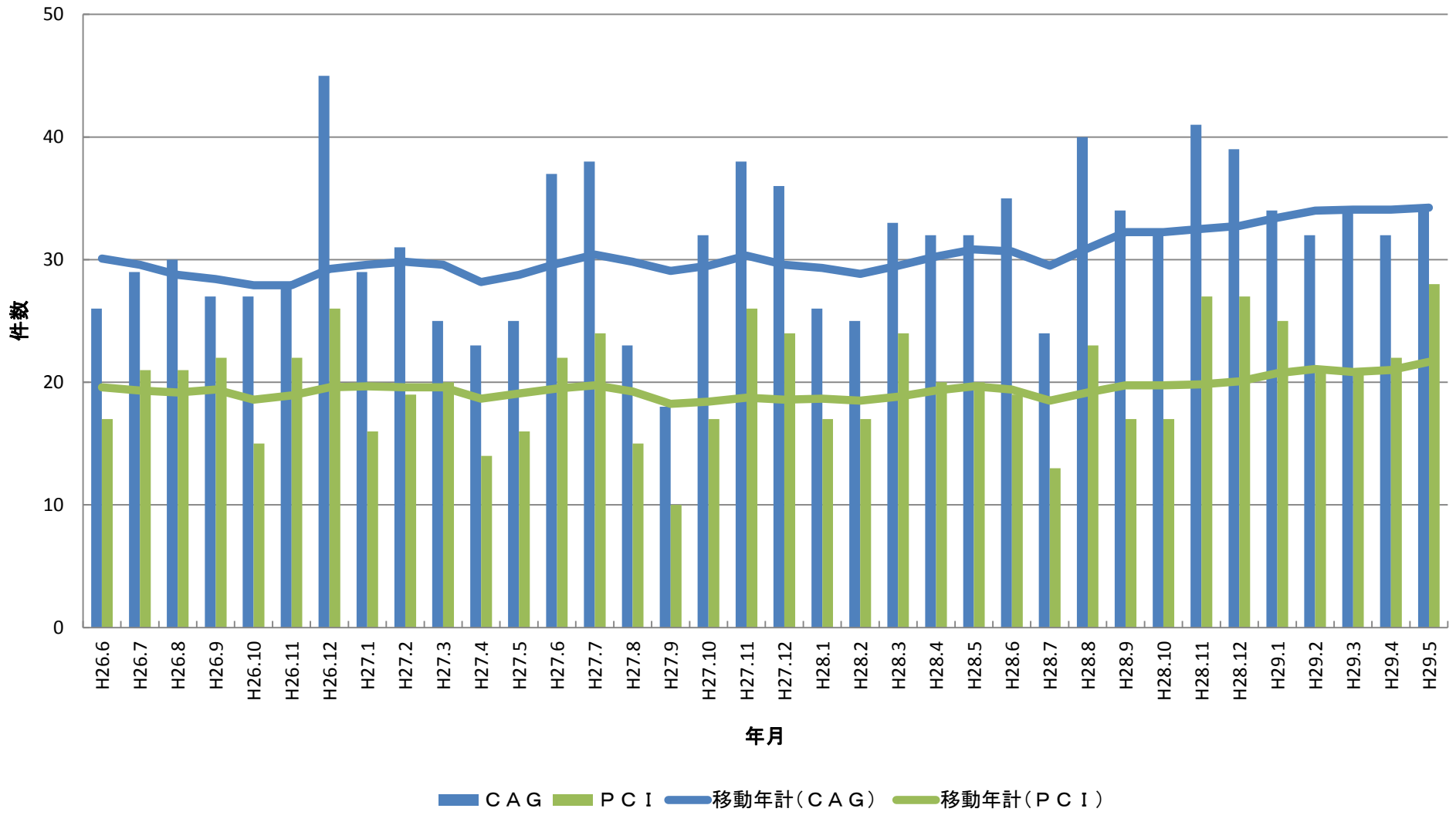


手術室件数

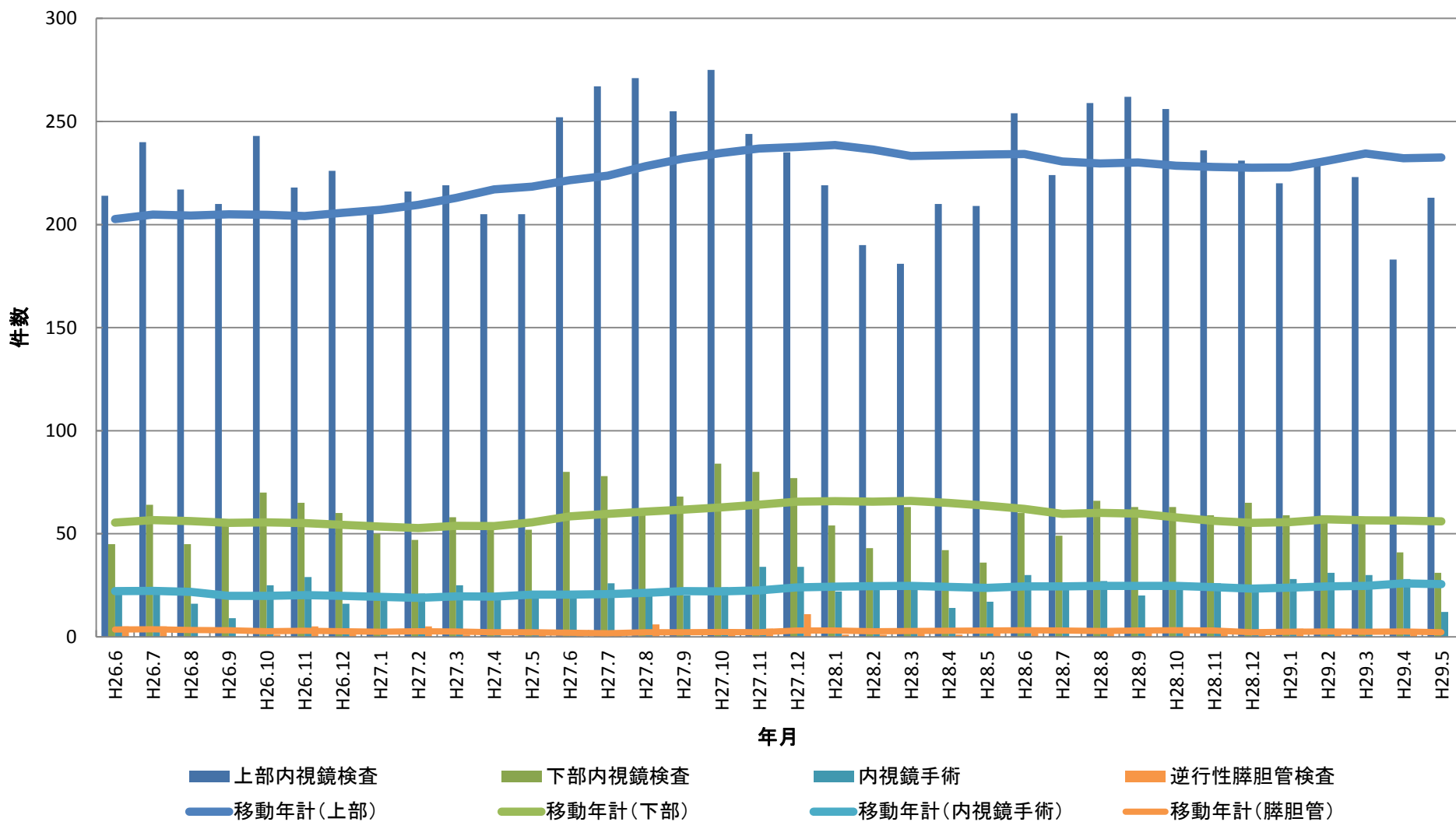


■ 手術(一般)
 ■ 鏡視下手術
 ■ 開胸手術
 — 移動年計(手術室)

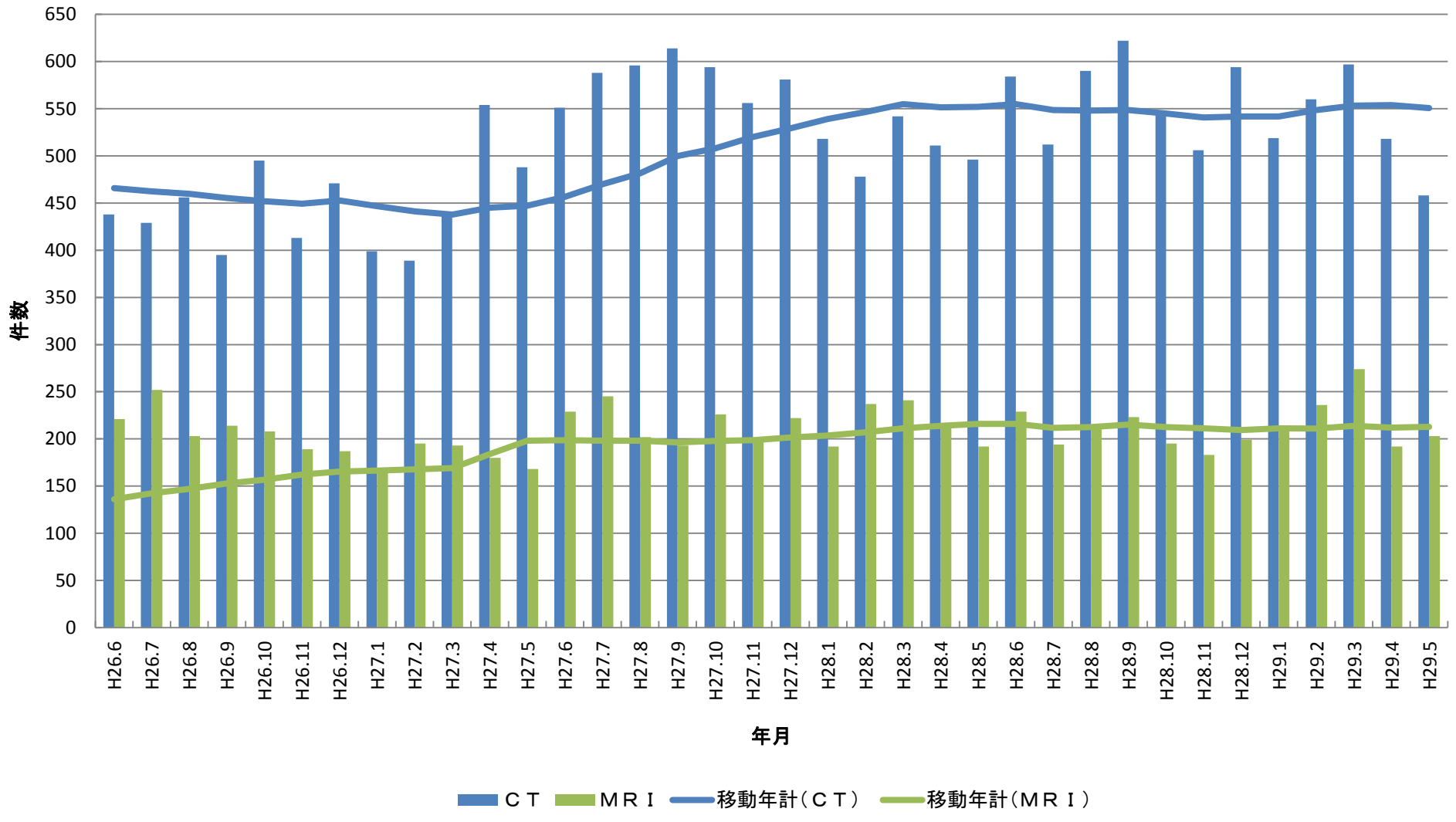
CAG・PCI件数



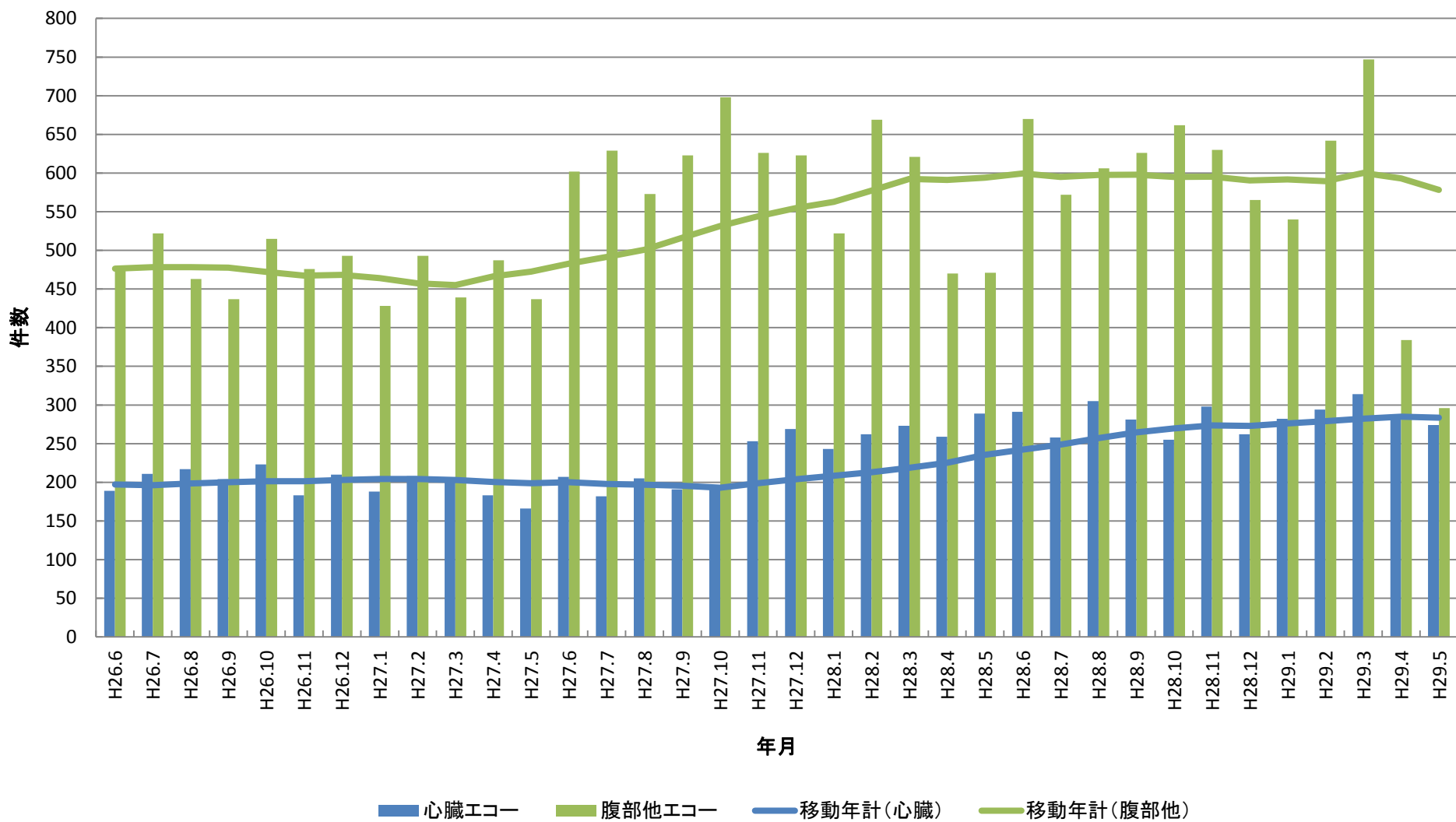
内視鏡検査・手術件数



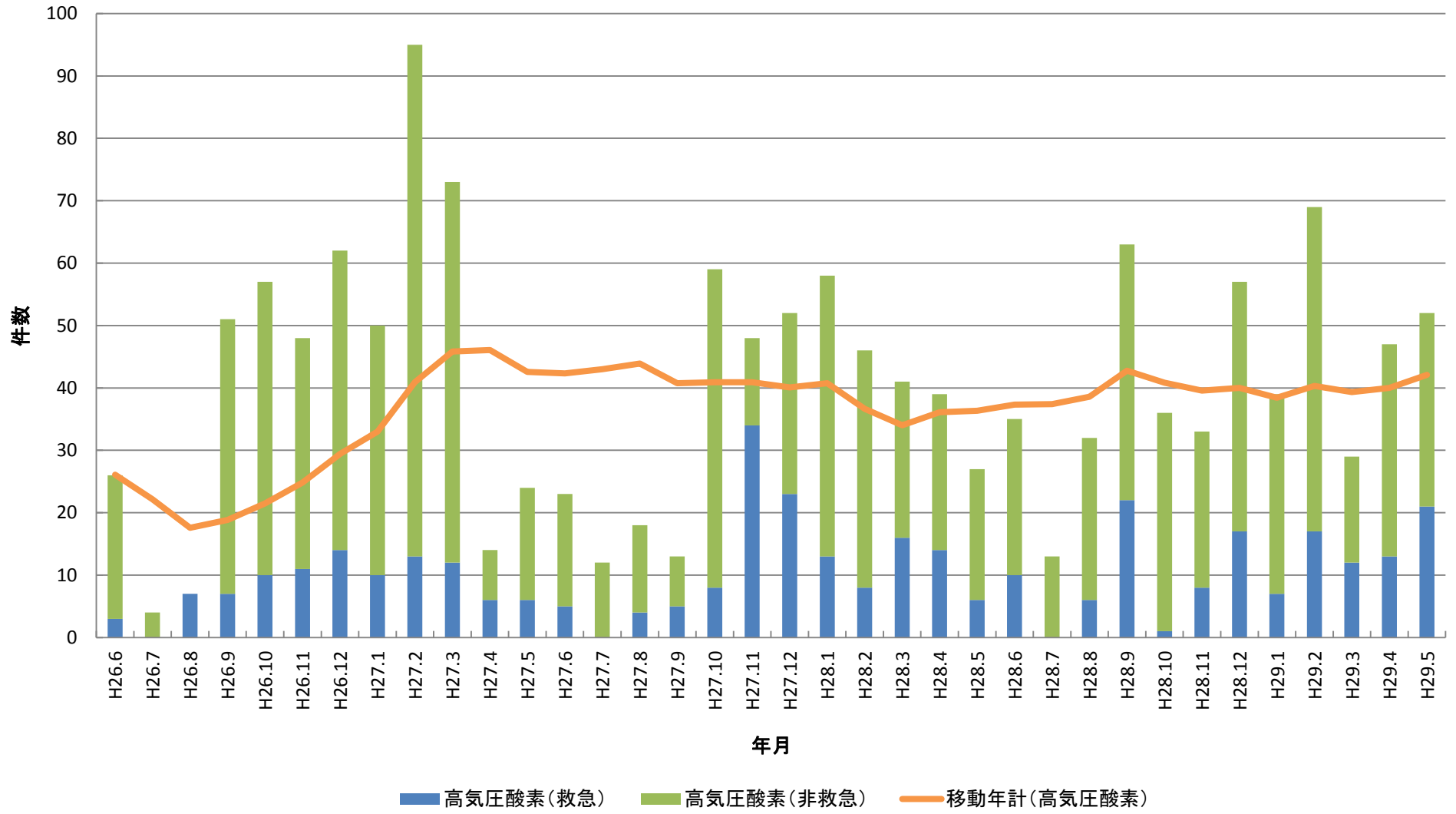
CT・MRI件数



超音波エコー一件数



高気圧酸素件数



ドック・企業検診件数

